

# Wasena Bridge



Roanoke City Council  
December 5, 2016



Hill Studio

# AGENDA

1. BACKGROUND and CONTEXT

2. STRUCTURAL SYSTEM

3. LAYOUT

4. ENSEMBLE



Background

HISTORY  
NEIGHBORHOODS  
VISUAL QUALITY

1

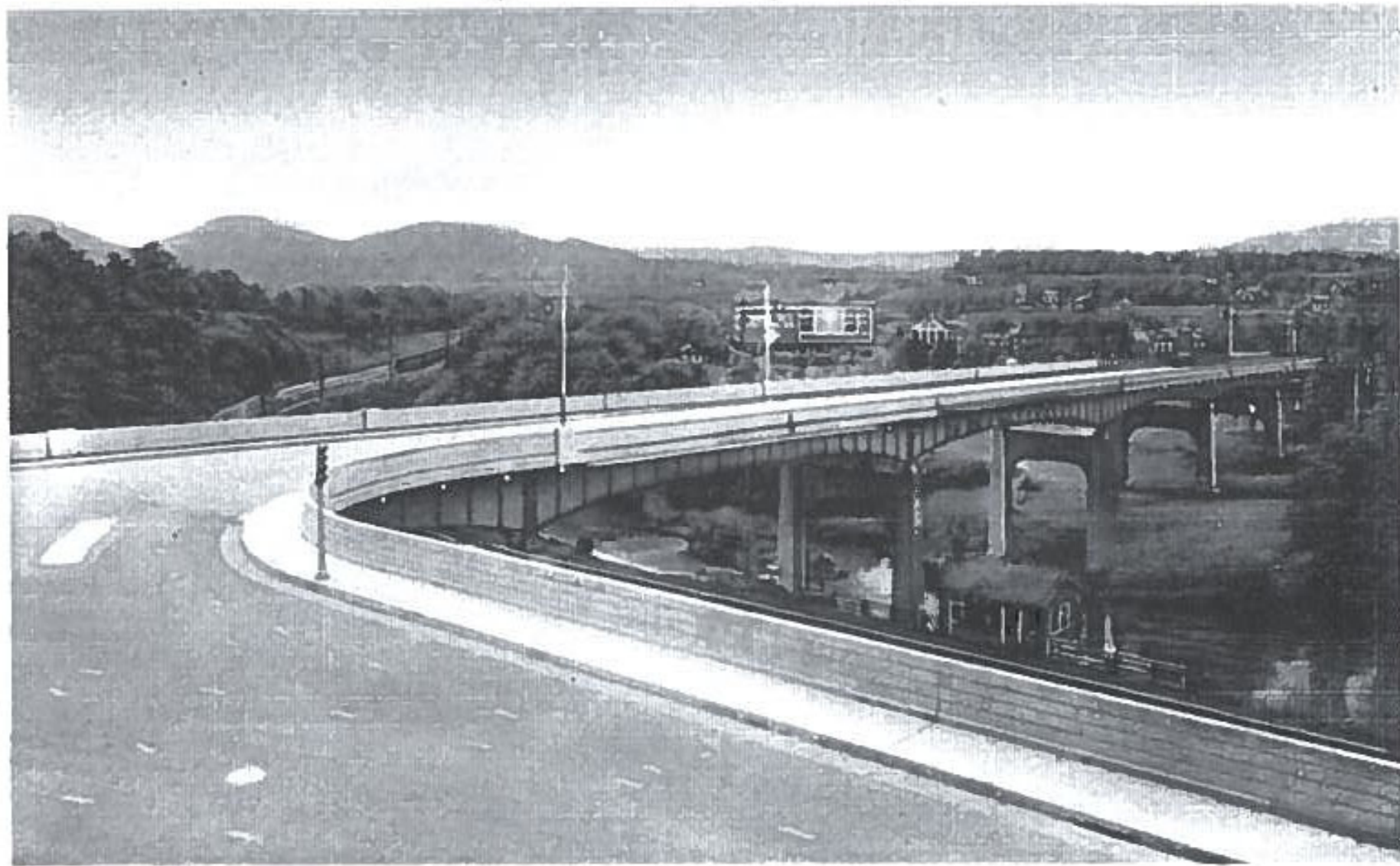
---

Wasena Bridge Context



Hill Studio





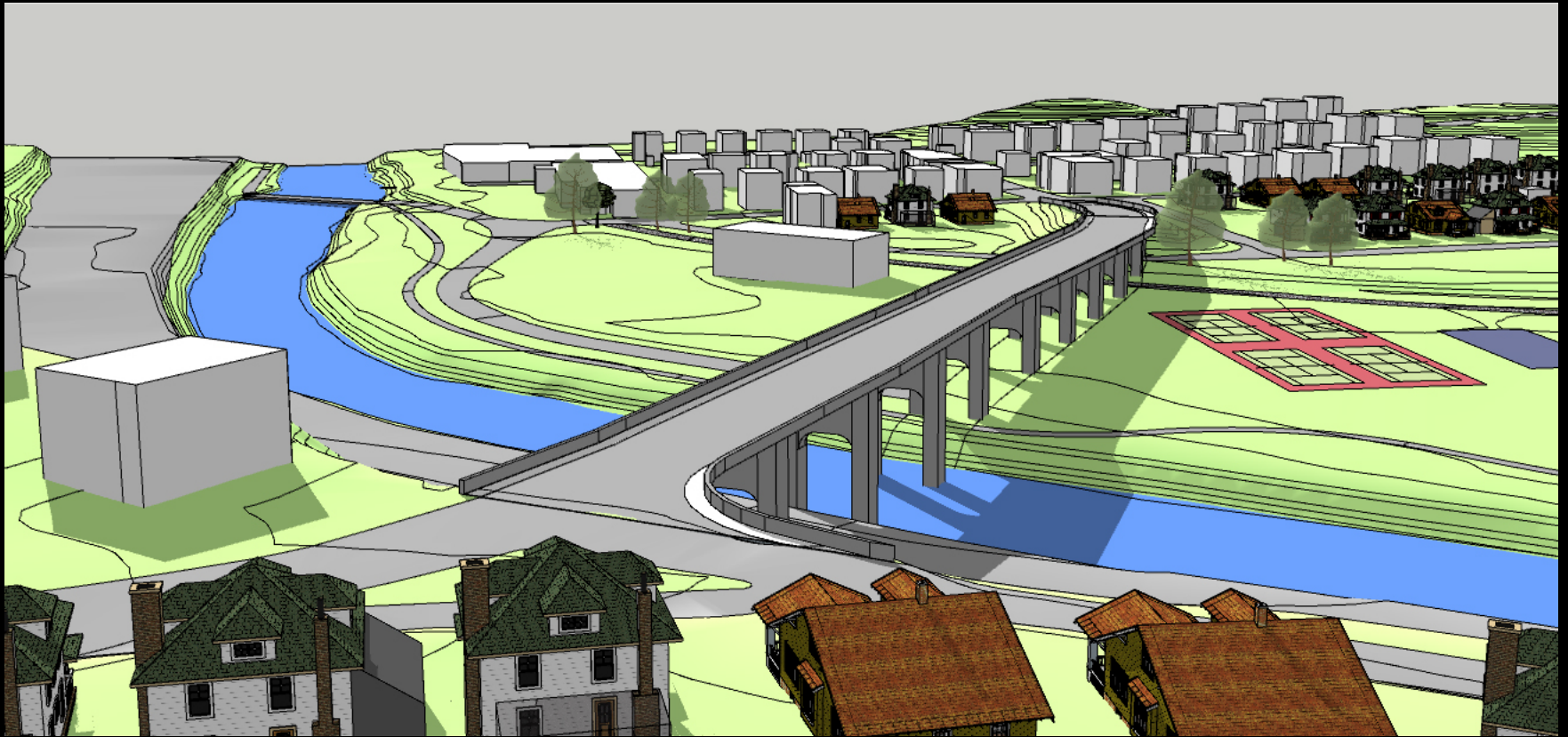
Hill Studio

The current Wasena Bridge was constructed in 1938-1939 as a Federal Emergency Administration of Public Works Project and replaced the earlier steel bridge built by the Wasena Land Company in 1912.



The Wasena Bridge retains a high level of integrity and contributes to the Wasena Historic District as the primary transportation link to the original City of Roanoke and its downtown.





Hill Studio

*Current Bridge Qualities: Connects Two Neighborhoods*













*Houses, walkways, motorists all enjoy views to the mountains over the current bridge*



Hill Studio

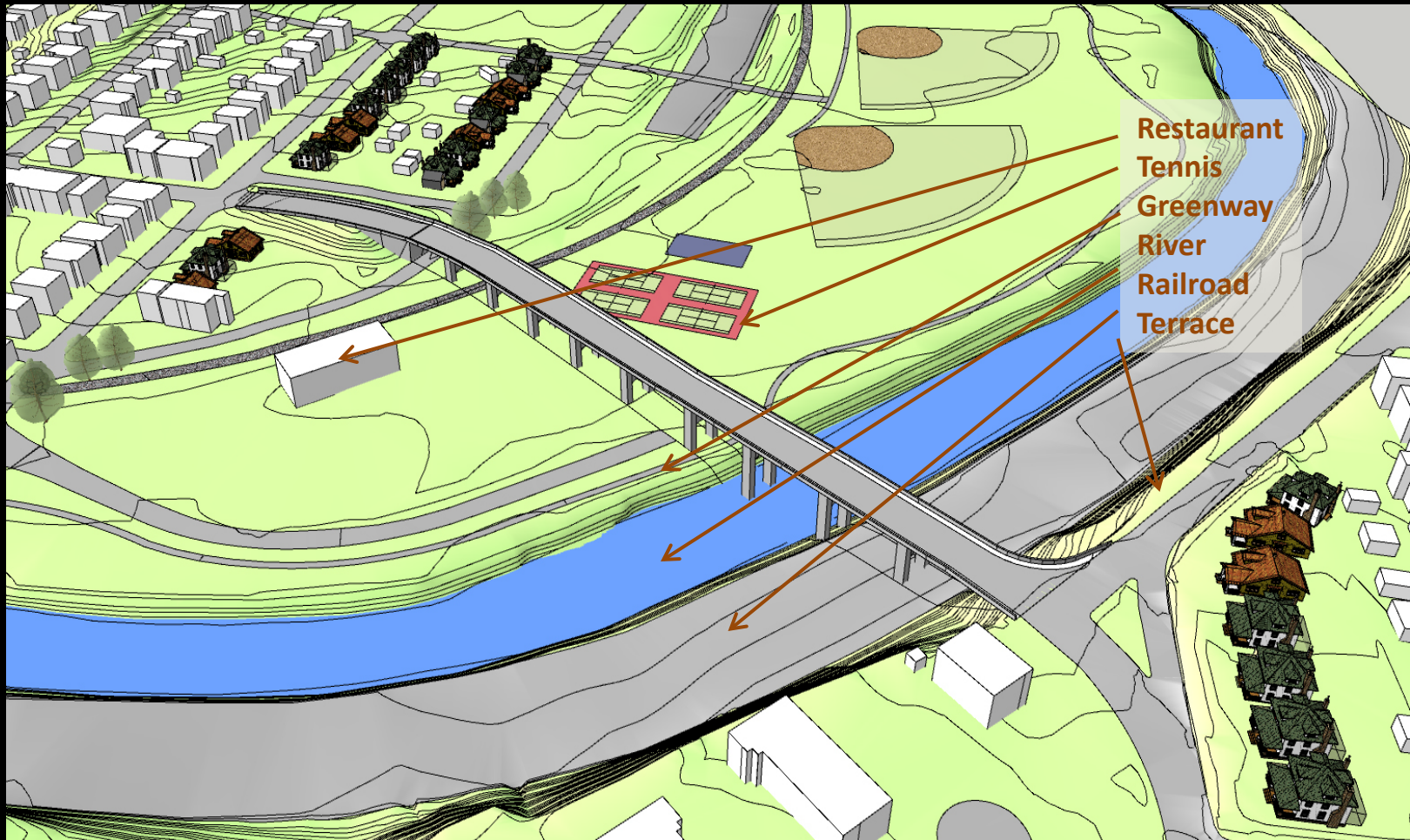




Hill Studio

*Flat Deck of current bridge allows views to the mountains*













Hill Studio

*Current Bridge : Treehouse Character of Pedestrian and Bicycle Facilities*

















Hill Studio

*Relationship to the Park*





*Qualities: Visual Quality for New Residential and Commercial Development*



Hill Studio





*Qualities: Gateway to Neighborhood Commercial*



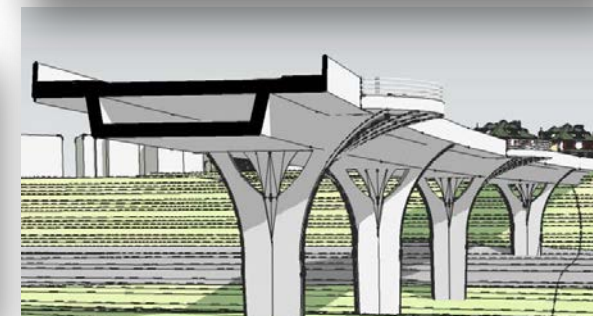
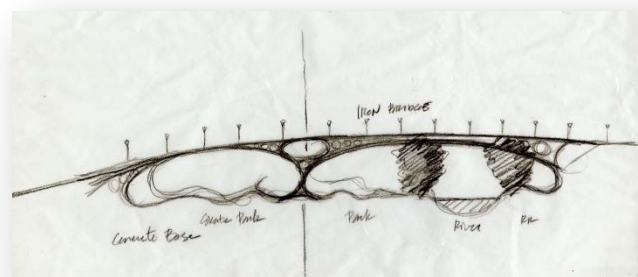
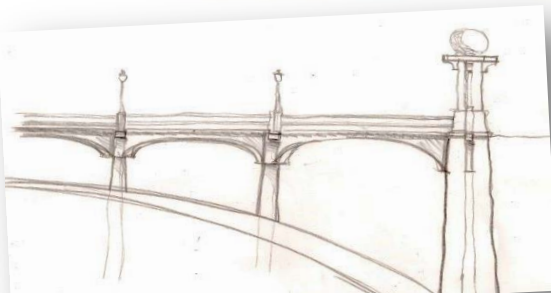
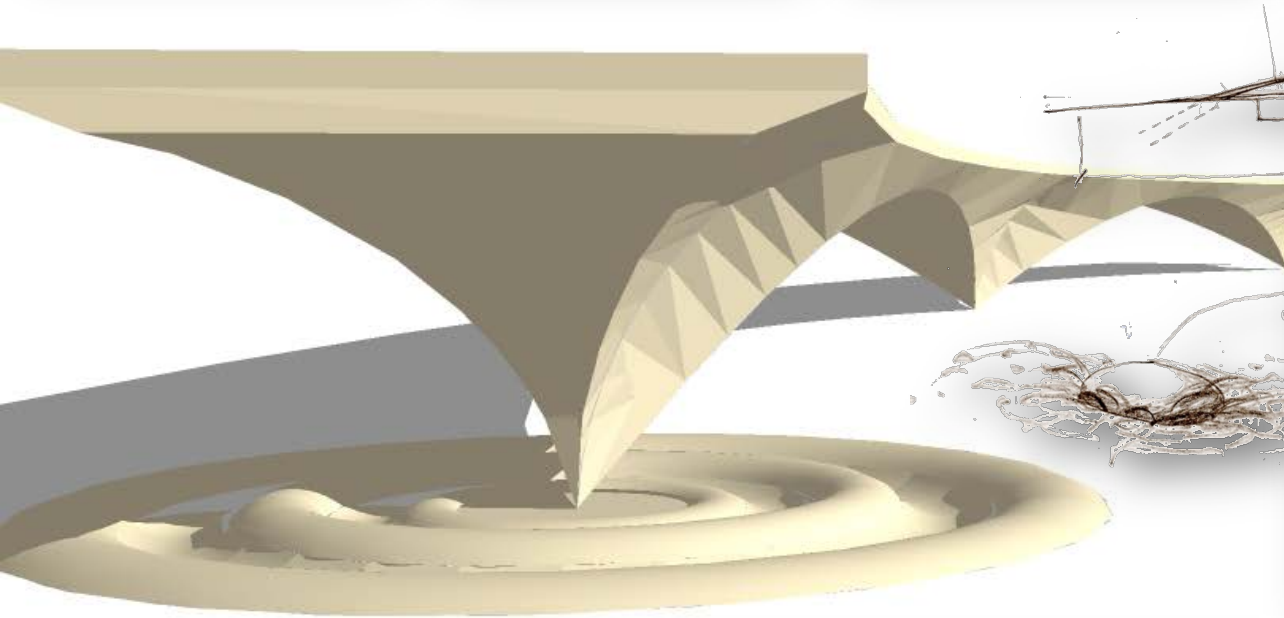
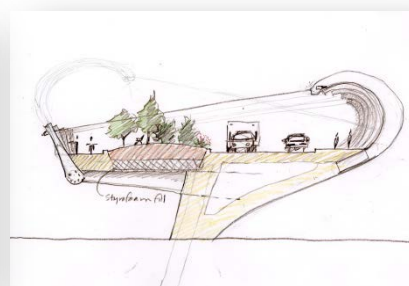
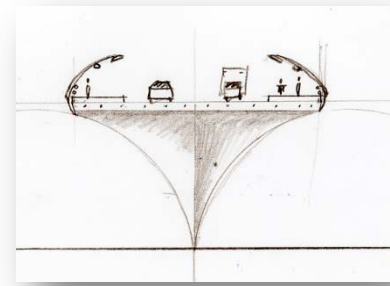
## STRUCTURAL CONCEPT

# 2

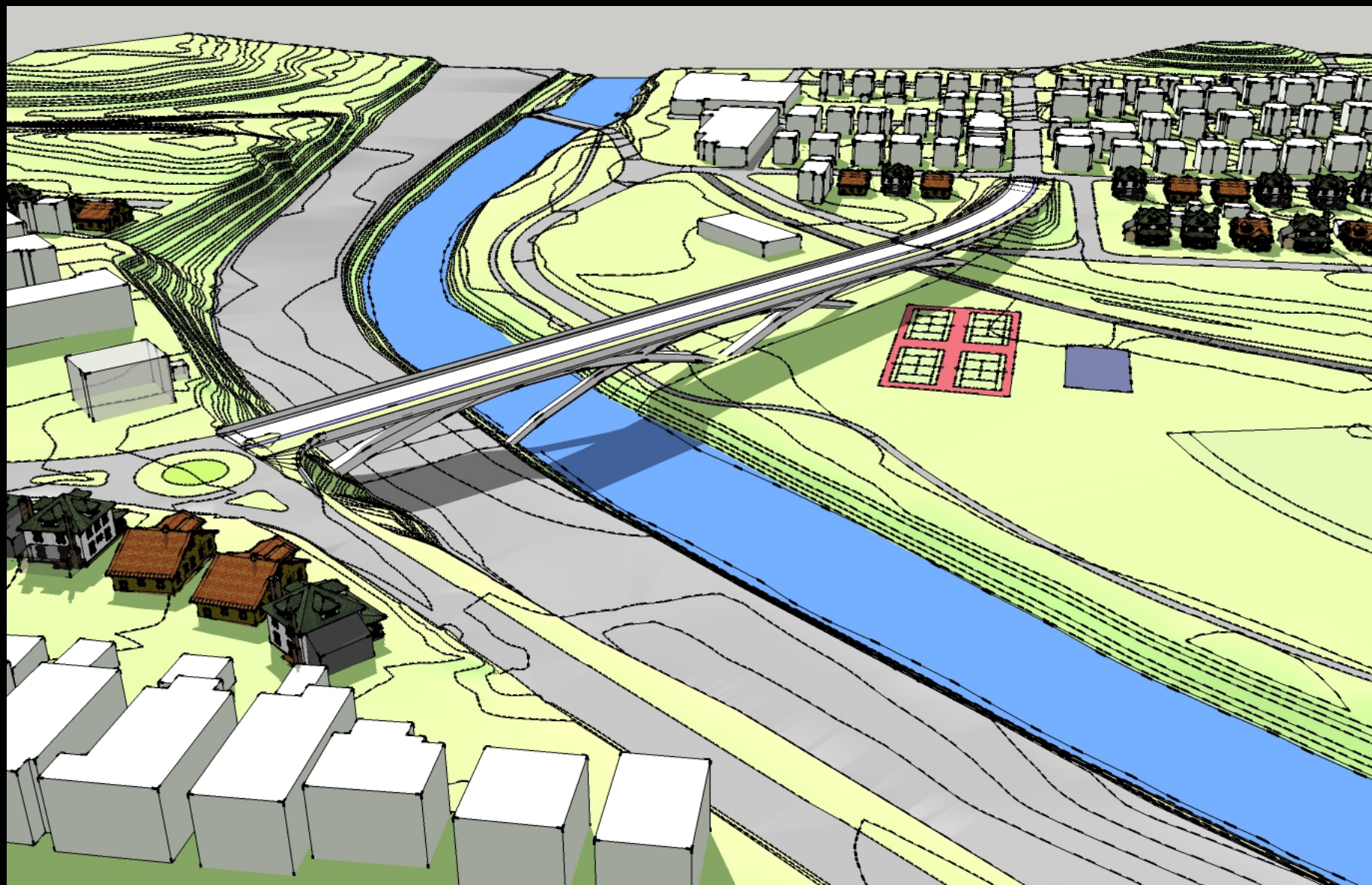
---

PRECAST POST-  
TENSIONED ARCH SPAN  
BRIDGE





Process: Design and Modeling Studies

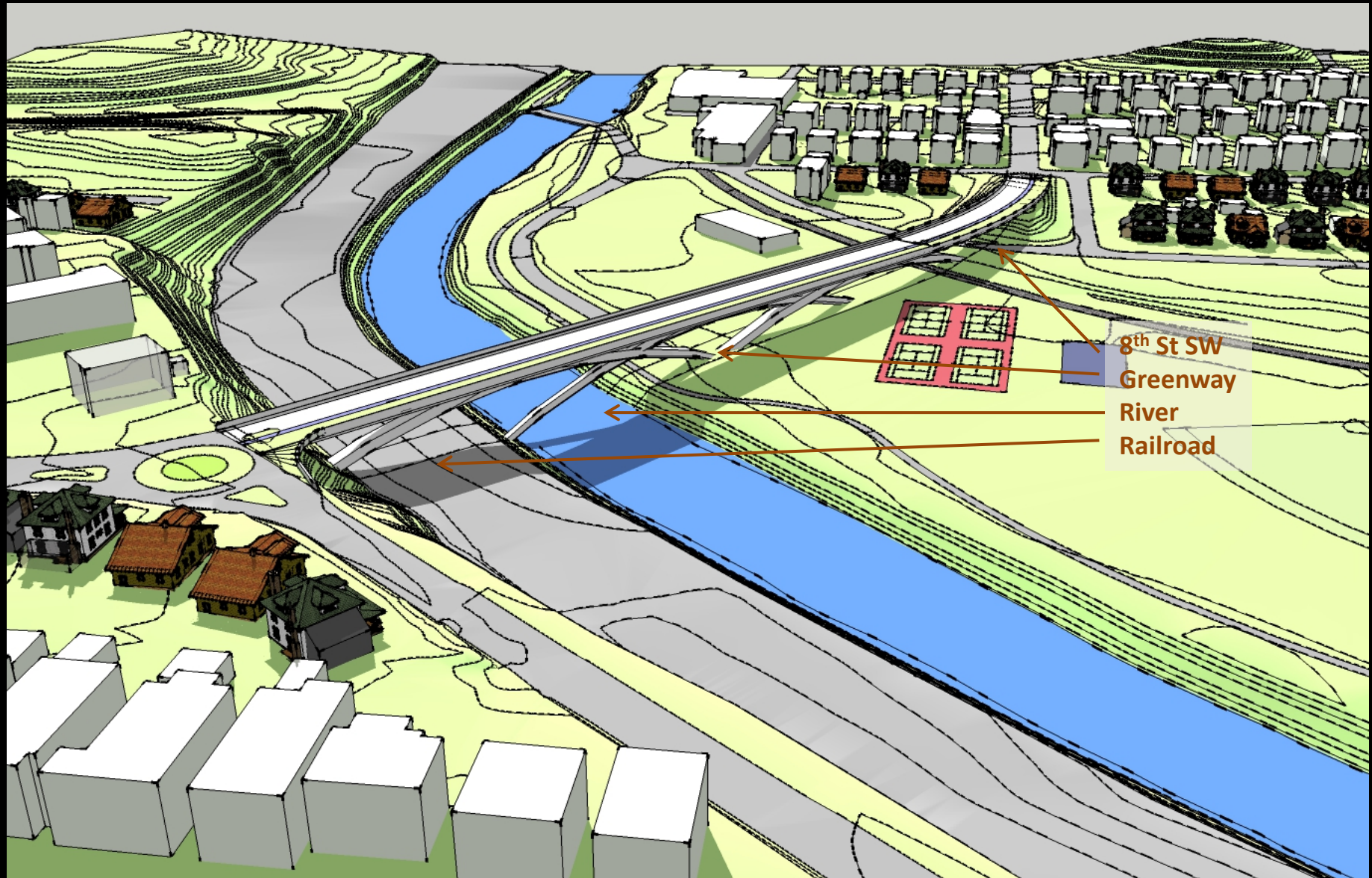


PRECAST POST-TENSIONED ARCH SPAN BRIDGE



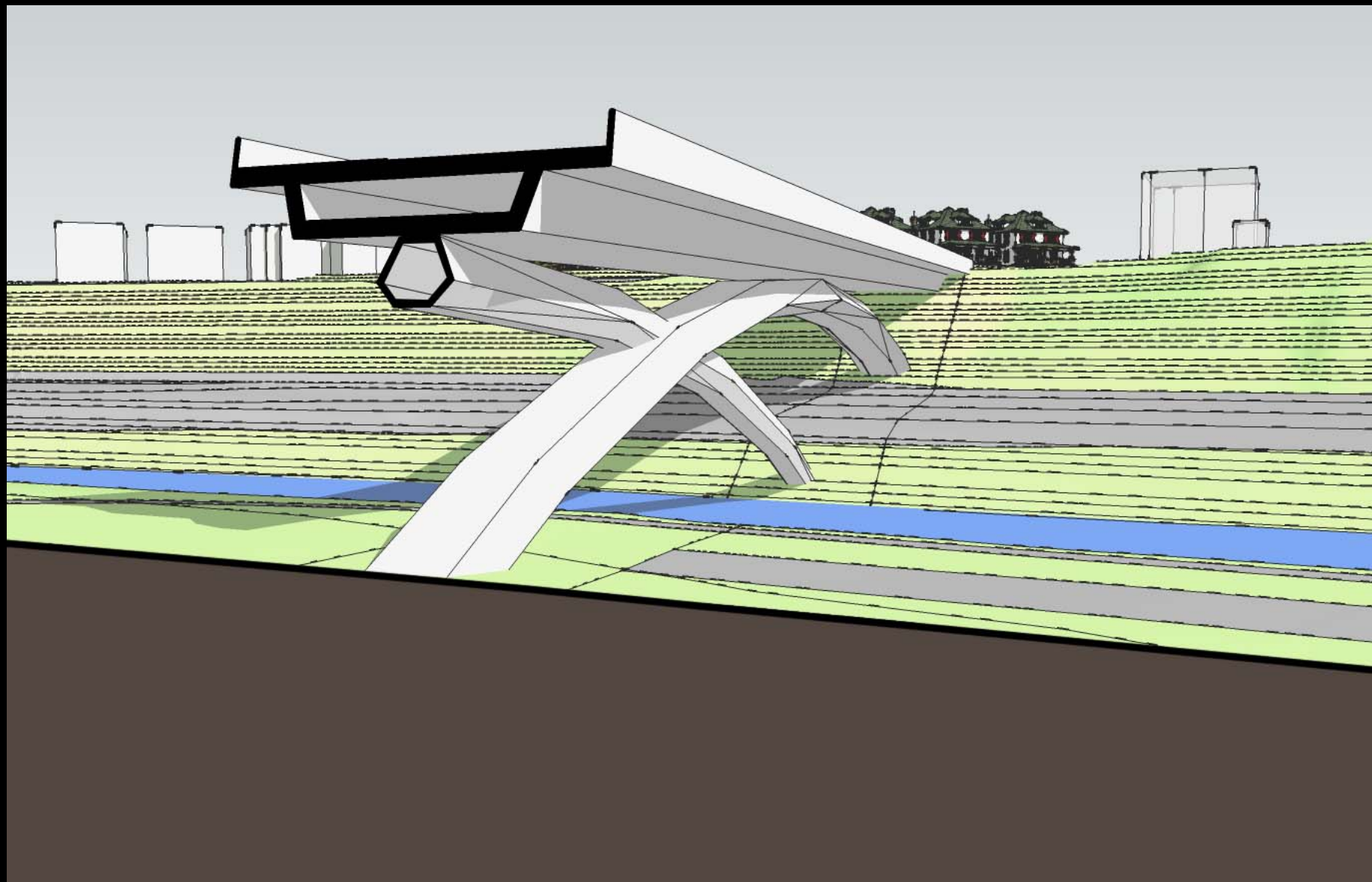
Hill Studio





*Arches Relate to Park Activities*





PRECAST POST-TENSIONED ARCH SPAN BRIDGE



Hill Studio

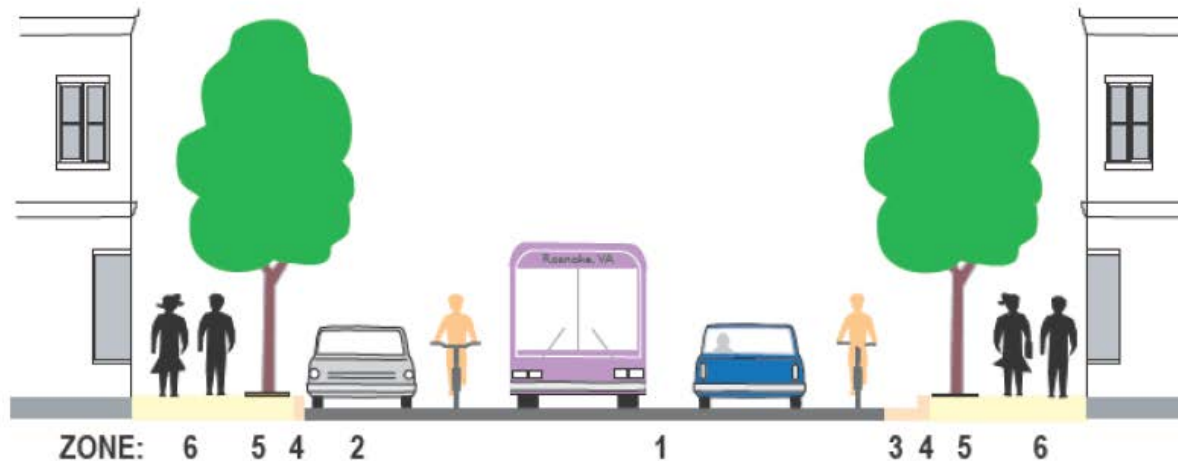
LAYOUT

3

---



*Preferred Multimodal Options for  
Downtown Character District Collector Streets  
Village Center Character District "Main Streets"*



**DV (2b)**

Zone 1: Travel - 30' (5'/11'/11'/3') striped bicycle lanes

Zone 2: Parking - 7'

Zone 3: Gutter/Drainage - 2'

Zone 4: Curb - 1'

Zone 5: Planter/Utilities - 8'

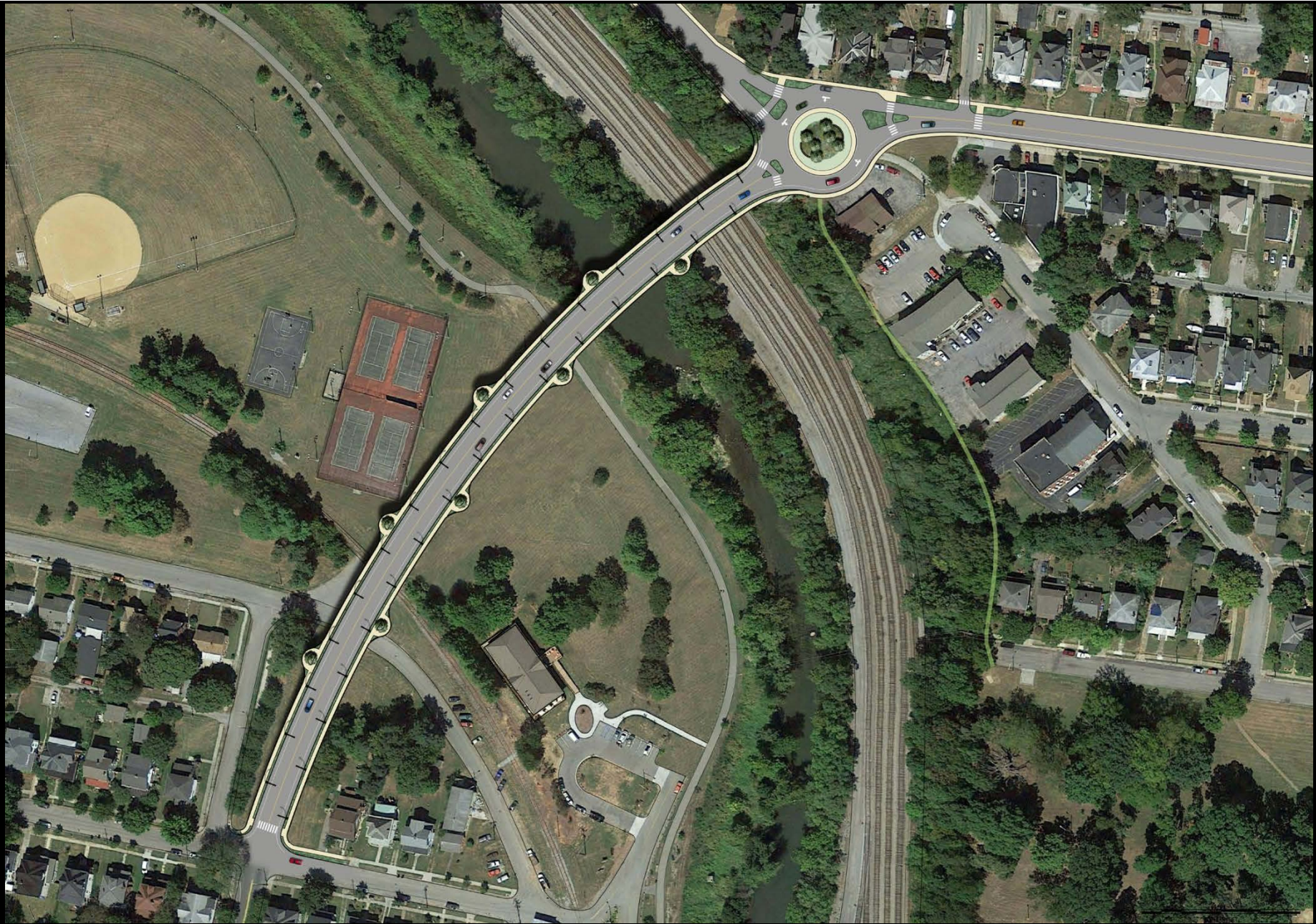
Zone 6: Pedestrian - 12'

Zone 7: ROW Edge - 0'

**Total ROW: 60'**







*Conceptual Plan: Curved Alignment Corresponds to Village Character District*



Hill Studio





*Gateway Roundabout to Old Southwest Neighborhood*



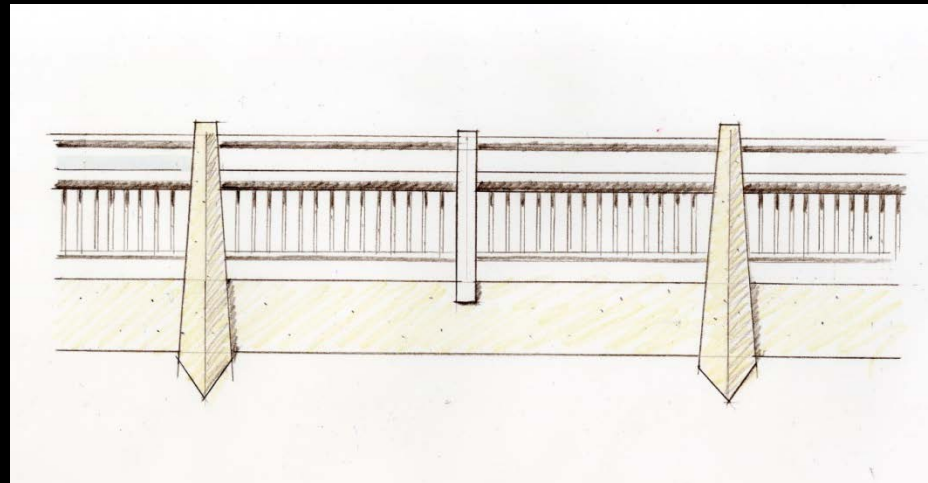
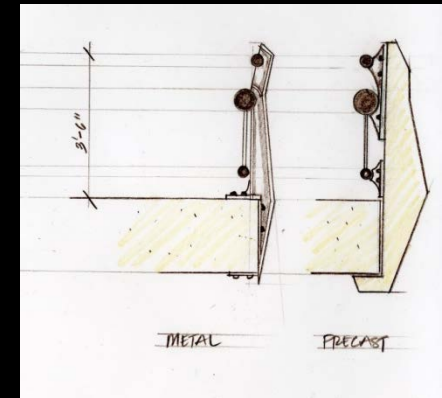
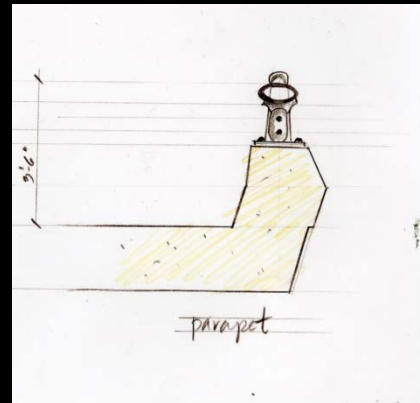
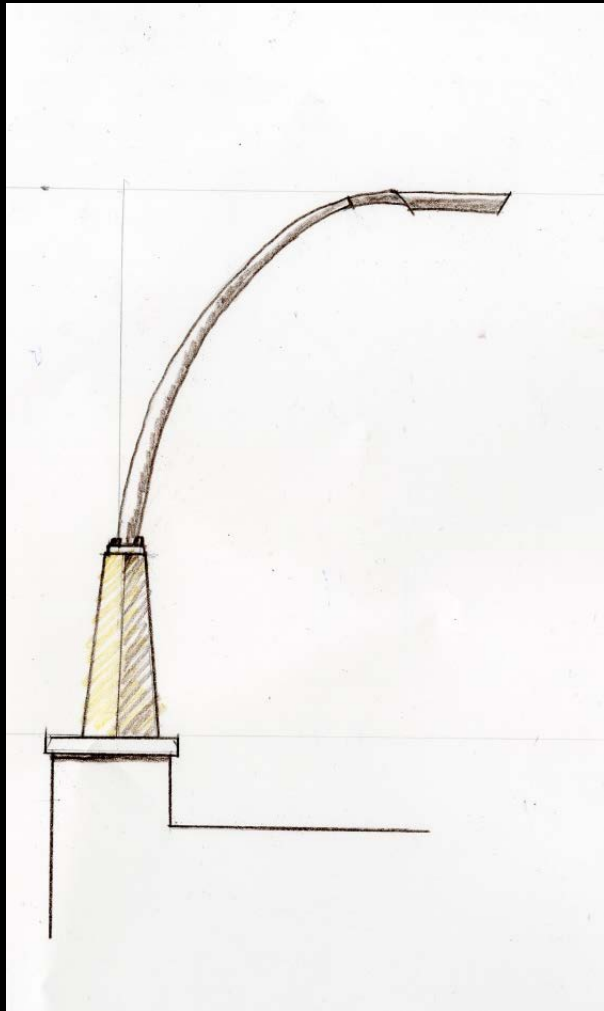
Hill Studio

ENSEMBLE

4

---

ROUNDBOUT  
SECTION  
GREENWAY OPTIONS  
RAILINGS  
LIGHTING  
INTERPRETIVE  
OPPORTUNITIES  
GREEN DESIGN  
NIGHT VIEWS

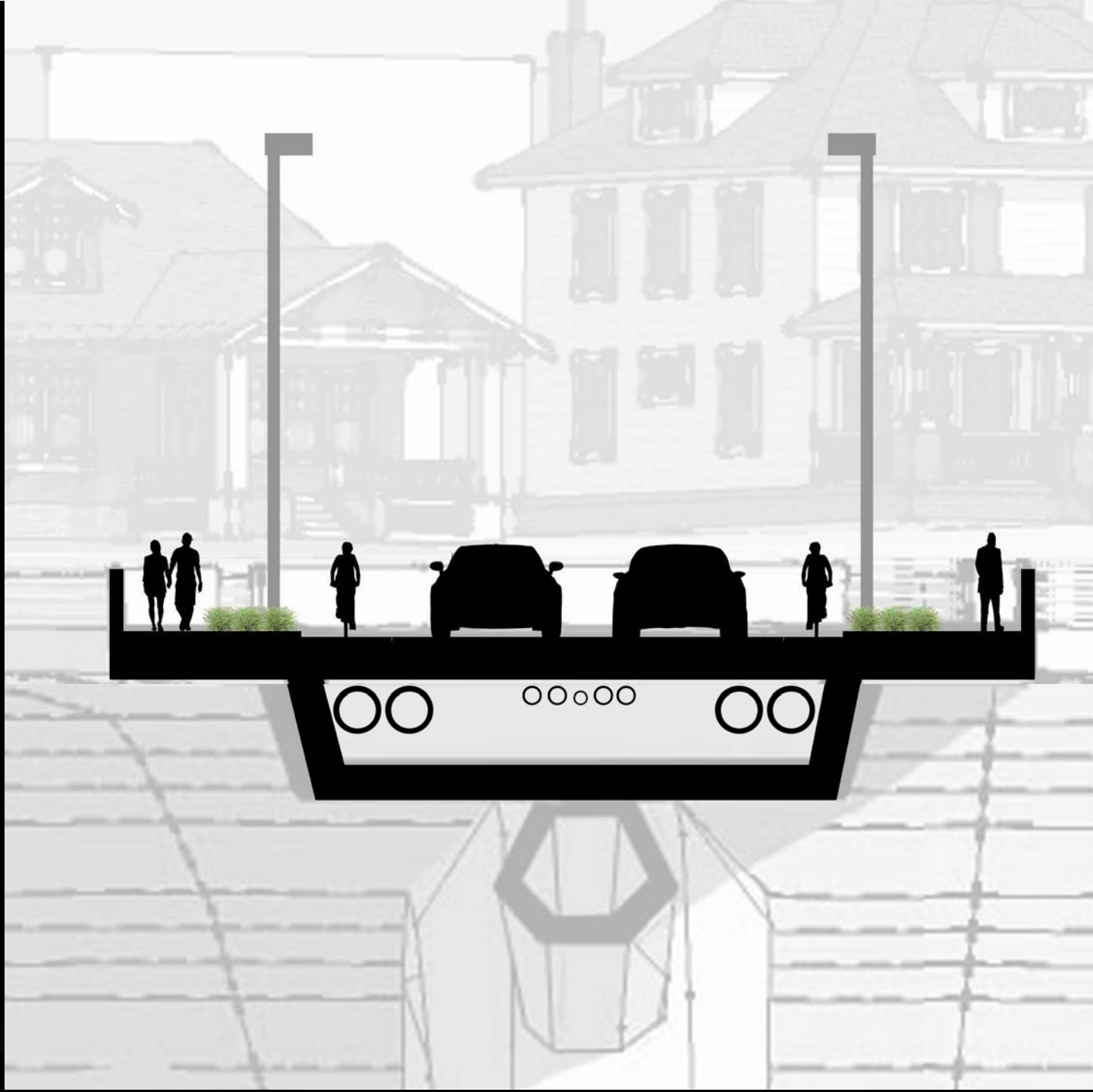


*Lights to illuminate Greenway and Road, High Visibility Railings*



Hill Studio





Hill Studio



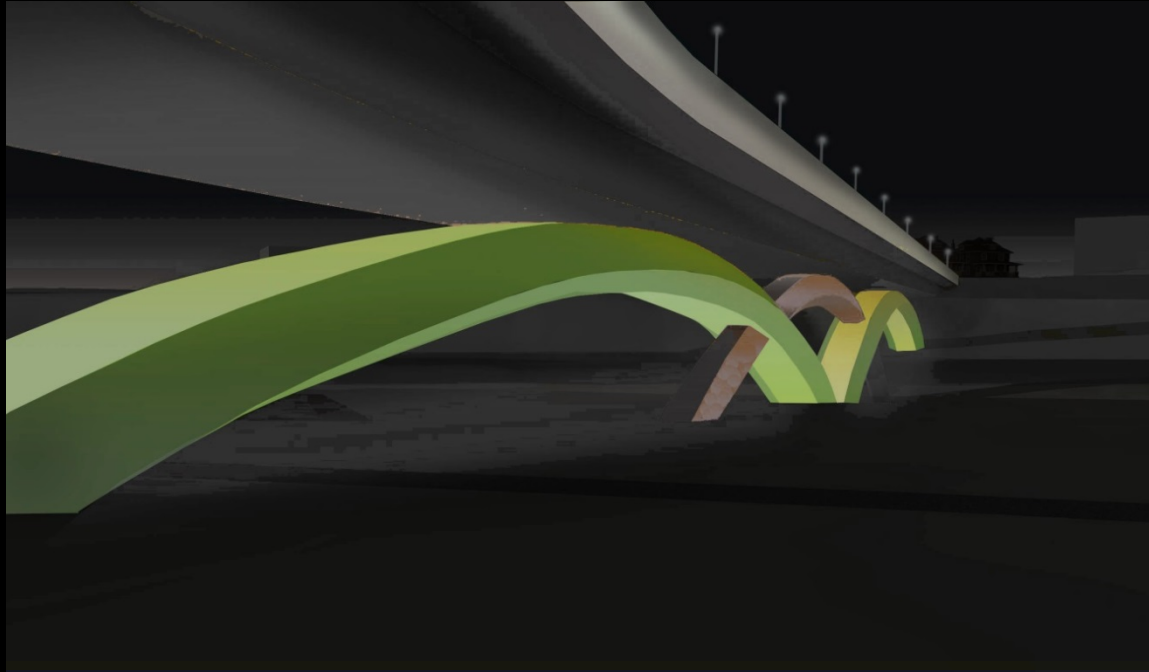
Hill Studio





Hill Studio

*Bridge at Night*







Hill Studio

*Houses, walkways, motorists all enjoy views to the mountains over proposed bridge*





*View along Greenway and River*



Hill Studio





*The Wasena Bridge*



Hill Studio



# Wasena Bridge



Roanoke City Council  
December 5, 2016



Hill Studio